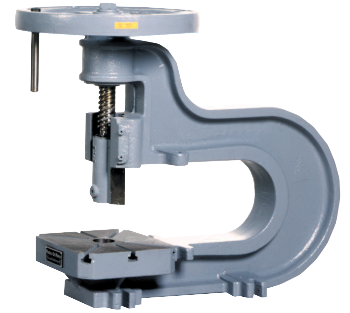
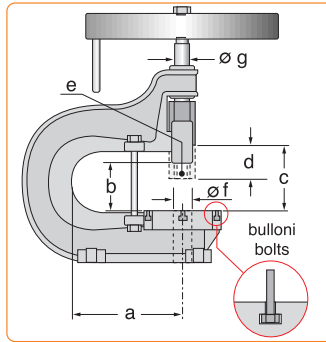


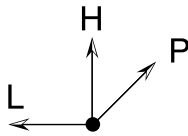
QUALITY SYSTEM
ISO 9001

B/cc

Bilanceri a collo di cigno con volano C-frame fly press with flywheel



Dimensioni
Dimensions



mm

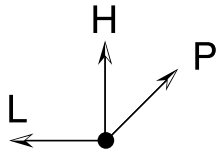
	L	P	H
40-CC	400	850	610
50-CC	520	1060	810
60-CC	570	1060	810

Modello / Model	40-CC	50-CC	60-CC
Articolo / Item	P134000	P135000	P136000
Forza (max) / Force (max)	2.000 kg * 4.000 kg **	3.500 kg * 7.000 kg **	5.000 kg * 10.000 kg **
a (mm)	400	500	500
b (mm)	145	210	220
c (mm)	165	240	240
d (mm)	85	150	160
e (mm)	ø 16 x 32	ø 20 x 40	ø 25 x 50
ø f (mm)	55	60	65
ø g (mm)	40	50	60
Tavola / Table (mm)	225 x 240	300 x 320	350 x 350
Bulloni / Bolt	M15	M15	M15
Peso / Weight	130 kg	270 kg	400 kg

CSM - CSL

Cesoi a ghigliottina motorizzate e a leva manuali Motorized guillotine and manual level shears

Dimensioni
Dimensions

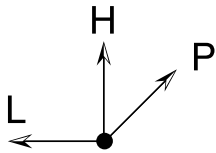


mm

	L	P	H
CSM 10/3	1650	1300	1300
CSM 15/2,5	2150	1300	1300
CSM 20/2	2650	1300	1300



Dimensioni
Dimensions



mm

	L	P	H
CSL 520	1350	600	450
CSL 750	1250	800	900
CSL 1020	1550	1050	1100

Modello / Model	CSM 10/3	CSM 15/2,5	CSM 20/2
Lunghezza utile taglio / Max cutting length	1050 mm	1500 mm	2050 mm
Profondità incavo / Gap depth	150 mm	150 mm	150 mm
Velocità di lavoro / Working speed	60 colpi/ min	60 colpi/ min	60 colpi/ min
Spessore lamiera / Sheet thickness	3,0 mm *	2,5 mm *	2,0 mm *
Registro posteriore / Backgauge travel	500 mm	500 mm	500 mm
Potenza assorbita / Absorbed power	3 kW	3 kW	3 kW
Tensione di alimentazione / Voltage	230V, ~1, 50/60 Hz		
Peso / Weight	1300 kg	1500 kg	1750 kg

Modello / Model	CSL 520	CSL 750	CSL 1020
Articolo / Item	A401000	A405000	A406000
Lunghezza utile taglio / Max cutting length	520 mm	750 mm	1020 mm
Registro posteriore / Backgauge travel	300 mm	380 mm	550 mm
Spessore lamiera / Sheet thickness	0,8 mm*	1,0 mm*	1,5 mm*
Peso / Weight	75 kg	220 kg	385 kg

* R= 40kg/mm²