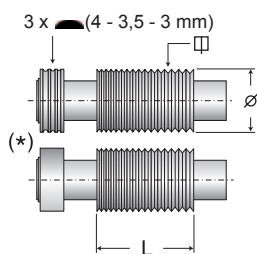


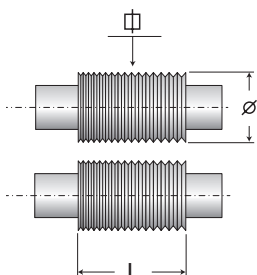
Laminatoi giochi ambi-filo Double-wire rolling mills

Filo - Wire

Lafil 160 AF
Lafil 175 AF
AFC 175
AFC 250+200

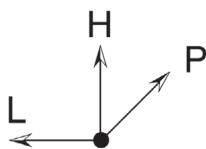


mm	L	Ø	rid. Φ
Lafil 160 AF	160	90	10,2+5,8
	160	90	5,4+1,0
Lafil 175 F	175	90	11,0+6,3
	175	90	5,9+1,0
AFC 175	175	100	9,0+4,6
	175	100	4,3+1,0

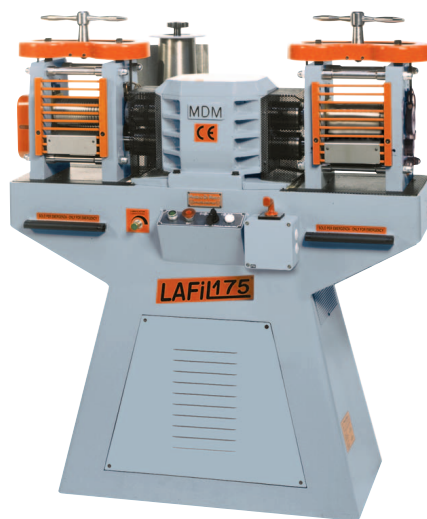


mm	L	Ø	rid. Φ
AFC 250+200	250	110	16,0+6,8
	200	110	6,2+1,0

Dimensioni
Dimensions



mm	L	P	H
Lafil 160 AF	1250	1160	1420
Lafil 175 AF	1250	1160	1420
AFC 175	1250	975	1430
AFC 250+200	1700	1320	1670



Lafil 175 AF



AFC 175

	u.m	Ambifilo - Double wire			
modello / model articolo / item		Lafil 160 AF (L403100)	Lafil 175 AF (L404100)	AFC 175 (L407100) *	AFC 250+200 (L415100) * ON REQUEST
Larghezza dei cilindri <i>Rolls width</i>	mm	160	175	175	250+200
Diametro dei cilindri <i>Rolls diameter</i>	mm	90	90	100	110
Max. apertura cilindri <i>Max. rolls opening</i>	mm	31	31	31	22
Velocità di laminazione <i>Rolling speed</i>	m min	7,3 14,6	7,3 14,6	12,5 25	12 24,5
Coppia max di laminazione <i>Max. rolling torque</i>	kgm	140	140	162	136
Sforzo max di laminazione <i>Max. rolling pressure</i>	ton	27	28	23	33
Potenza motore laminatoio <i>Rolling mill motor power</i>	kW	3-5	3-5	3,8-4,8	3-5
Potenza motore aspo <i>Motor power coiler</i>	kW	0,25 kW	0,25 kW	0,25 kW	0,25 kW
Tensione <i>Voltage</i>	V Hz	400~3 50/60	400~3 50/60	400~3 50/60	400~3 50/60
Peso <i>Weight</i>	Kg	635	640	700	1170

Altre tensioni disponibili su richiesta / Other voltage available on request.

- Aspo (n.1) avvolgitore motorizzato incluso / 1 pcs. motorized coiler included: versioni/model Lafil-L403803.

*Versioni con cilindri su cuscinetti a rulli AFC / Models with rolls on roll bearings AFC.